

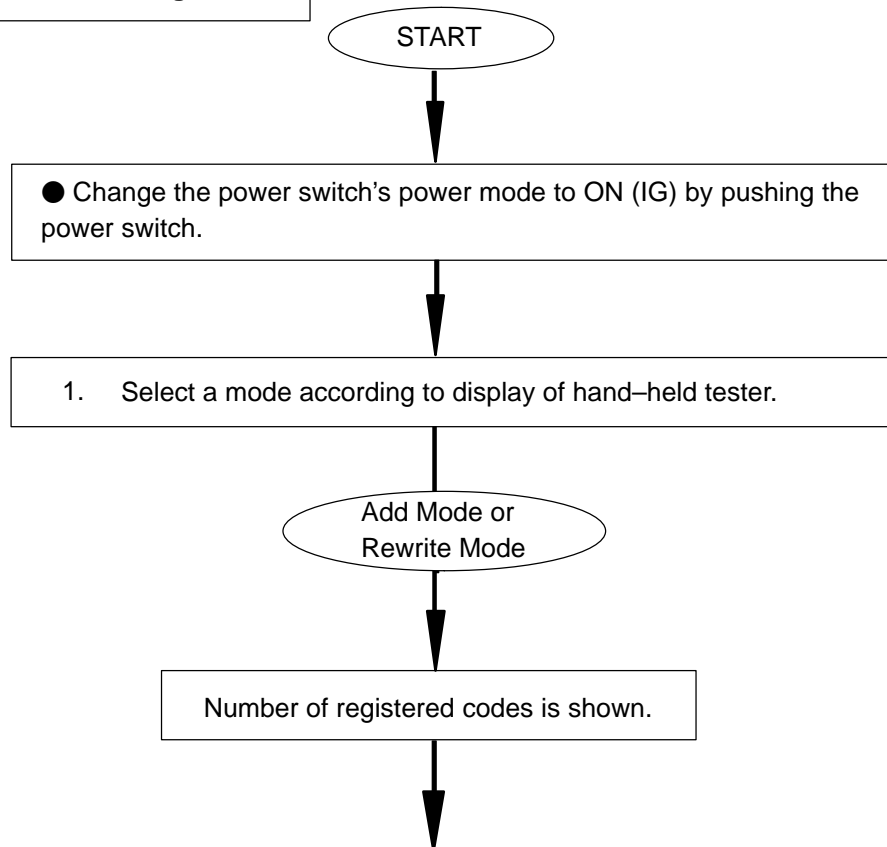
REGISTRATION

HINT:

- Register the recognition code when replacing the door control transmitter or the door control receiver.
- The add mode is used to register new recognition codes while still retaining codes already registered. This mode is used when a new transmitter is added. If the number of registered codes exceeds 4, the previously registered codes will be erased in order, starting from the first registered code.
- The rewrite mode is used to erase all the previously registered recognition codes in order to register new recognition codes. This mode is used when the transmitter or the door control receiver is exchanged for a new one.
- The confirmation mode is used to confirm how many recognition codes have already been registered before an additional registration of a recognition code.
- The prohibition mode is used to erase all the registered codes and disables the wireless door lock function. This mode is used when the transmitter is lost.
- All of the following registration procedures must be performed in order continuously.

1. REGISTER RECOGNITION CODE

Flow Chart of Recognition Code Registration



Continued from previous page

2. Press LOCK and UNLOCK switch on transmitter once simultaneously.

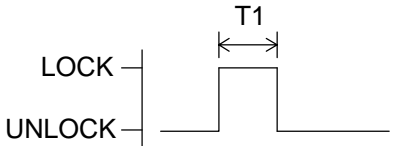
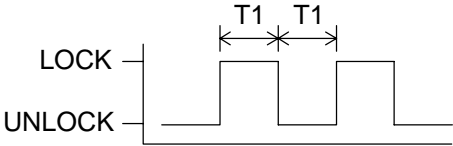
Within 3 seconds

3. Press either switch.

Within 30 seconds

Response to registration completion:

Body ECU automatically performs power door LOCK-UNLOCK operation to show which mode has been selected.

LOCK-UNLOCK Occurs Once	LOCK-UNLOCK Occurs Twice
Registration of recognition code has been completed.	Registration of recognition code has failed.
	
T1: Approx. 1 second	

HINT:
If LOCK-UNLOCK operation is performed twice, registration of recognition code has failed. Perform registration procedures by beginning once again.

Within 40 seconds

Proceed to flow chart to finish registration.

If other transmitter is to be registered.
HINT:
4 recognition codes can be registered at once.

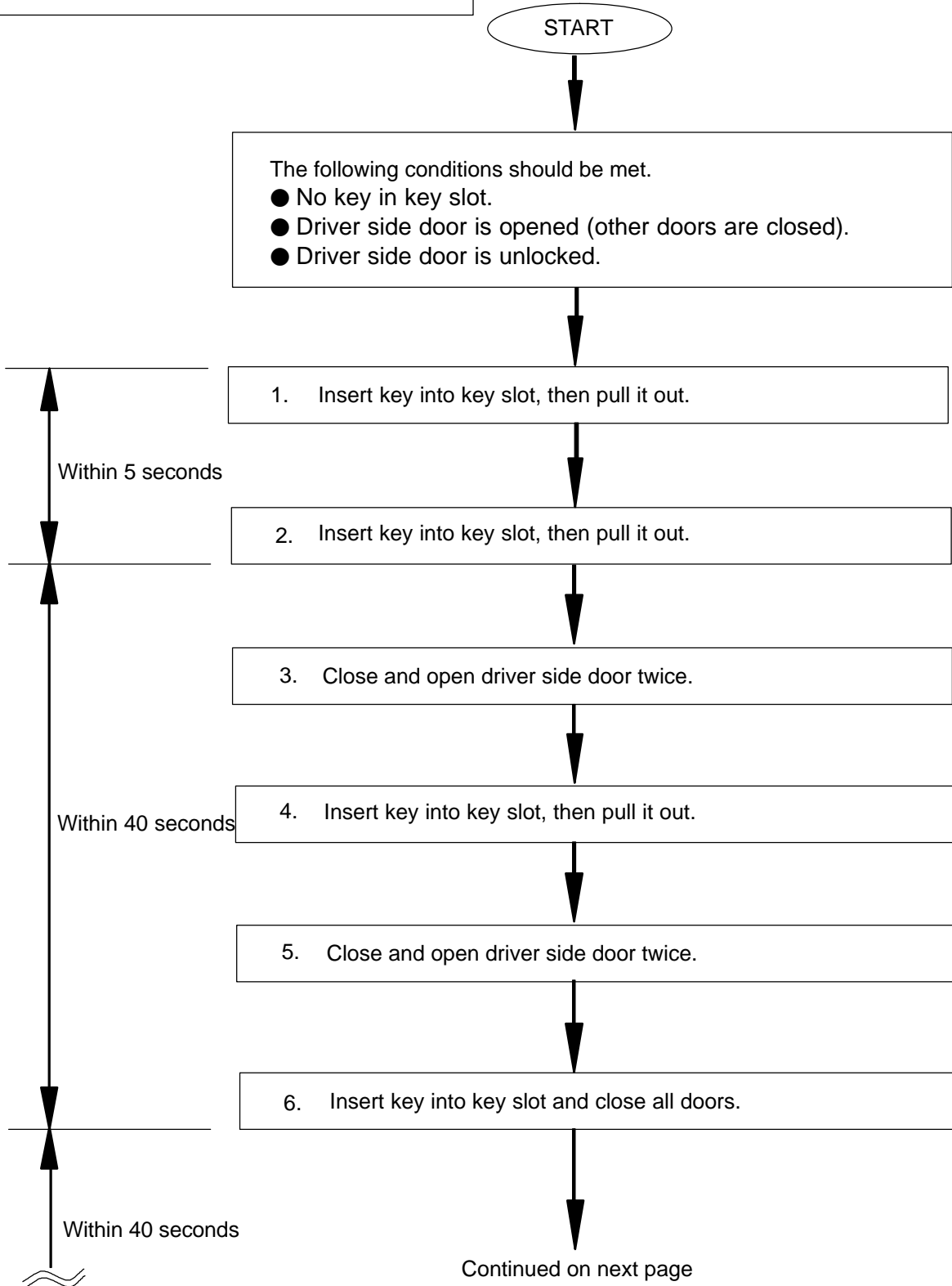
Perform either of the following.

- ☑ Use hand-held tester to order completion.
- ☑ Disconnect hand-held tester.

Registration of recognition codes (add mode and rewrite mode) is completed.

2. REGISTER RECOGNITION CODE

Flow Chart of Recognition Code Registration



Continued from previous page

Mode Selection:

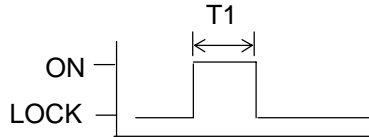
7. Change the power switch's power mode between ON (IG) and OFF repeatedly once within 1 seconds by pushing the power switch.

Number of ON-LOCK operations of ignition switch:

Add Mode

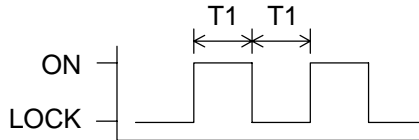
ON-LOCK operation: 1 time

T1: Approx. 1 second



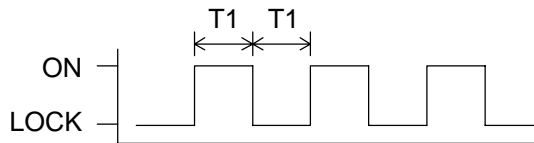
Rewrite Mode

ON-LOCK operation: 2 times



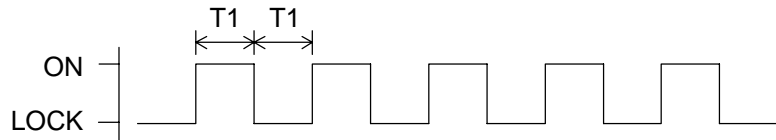
Confirmation Mode

ON-LOCK operation: 3 times



Prohibition Mode

ON-LOCK operation: 5 times



If the number of the ON-LOCK operations of the ignition switch is 0, 4 or 6 or more, there will be no response (power door lock and unlock operation) to show which mode has been selected.

Within 40 seconds

8. Remove key from ignition key cylinder.

Within 5 seconds

Continued on next page

Within 5 seconds

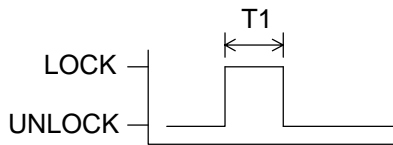
Continued from previous page

Response to selected mode (Power door lock operation):

Body ECU automatically performs power door LOCK-UNLOCK operation to inform which mode has been selected.

Add Mode

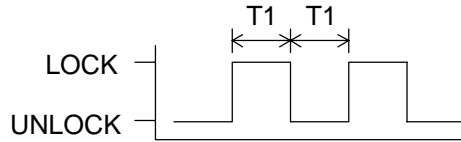
LOCK-UNLOCK operation: 1 time



T1: Approx. 1 second
T2: Approx. 2 seconds

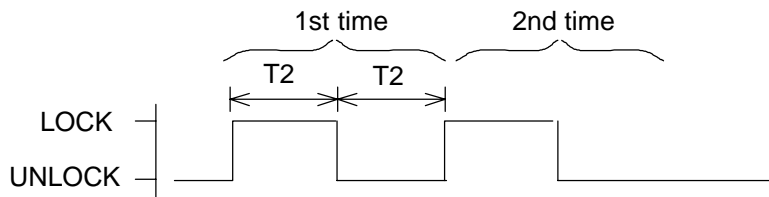
Rewrite Mode

LOCK-UNLOCK operation: 2 times



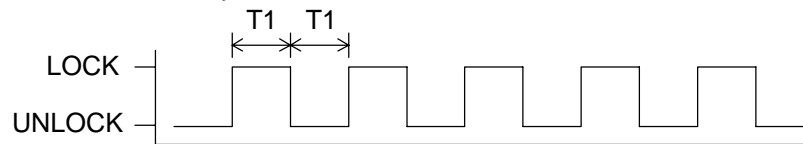
Confirmation Mode

LOCK-UNLOCK operation: The number of registered codes (1 - 5 times)



Prohibition Mode

LOCK-UNLOCK operation: 5 times



HINT:

- In confirmation mode, when LOCK/UNLOCK operation is performed twice, the number of registered recognition codes is 2.
- In confirmation mode, when 0 codes are registered, LOCK/UNLOCK operation is automatically performed 5 times.

Within 40 seconds

